



Youth-Led Artist's Commission Call

Artswork in partnership with St Mary's Hospital is looking to commission a local professional creative, or creatives, to work in collaboration with young people from the Isle of Wight NHS Trust Youth Forum, to transform a neglected outside space at the children's ward into an age-appropriate garden for young people aged 11+ who are patients on, or are visiting, the Children's Ward.

Up to £12,500 is available for this work, to include the artist's time, materials, construction costs, installation costs, travel, expenses and VAT. The exact amount available will be determined by the complexity of the project / cost of materials involved etc. The Rotary Club have generously agreed to clear and deck the space prior to the commission starting; providing a 'blank canvas' to work with.

Deadline: 10:00 on Monday 27 November 2023

Context

The Young Cultural Changemakers Programme is putting creative place-making power in the hands of young people. Young people across the south east are empowered to lead on significant creative projects in their local area, transforming their lives and those of their neighbours. Working with local communities and with a range of partners we are listening to the views, experiences and ideas of children and young people and supporting them to explore creative ways to make change happen in their areas.

Brief

The overall aim of the commission is to co-create a multi-functional space in which young people, age 11+, staying on, or visiting, the Children's Ward at St Mary's can relax and have fun. The young people have said:



Supported using public funding by
**ARTS COUNCIL
 ENGLAND**

Artswork Limited
 Registered Charity No. 800143
 Company Limited by guarantee
 Registered in England No. 2150619

- The garden should be multifunctional – sometimes it will be used as a quiet space to ‘get away from it all’, sometime for socialising, sometimes for fun and games. Suggestions include a play building block wall, chalk board for drawing, kinetic sand, mini golf, table football, giant stacking blocks and a white wall for drawing and as an outdoor cinema screen
- The garden should be accessible to users with mobility aids including power wheelchairs
- The aesthetic for the garden should draw on the natural world and should be calming and clutter-free. The young people would like to include plants / gardening area but these need to be low maintenance and anti-allergy. Suggestions include a bird-feeding area and a ‘gratitude tree’ so you can write, tie and display messages of gratitude
- Consideration should be given to including a sensory area or areas. The young people are interested in the creative use of lights, particularly for de-escalation
- Seating is important, but space is limited. Suggestions include built-in tiered seating, bean bags, hammocks, hanging chairs/pods, swing chairs
- The young people want to make the most of the natural light, but are interested in including some form of shelter (possibly removable) or den / dome /safe space

Timeline

10:00 on Monday 27 November 2023	Deadline for applications
Friday 1 December 2023	Shortlisted candidates will be notified
Thursday 7 December 2023 6pm-8pm	‘Dragons Den’ presentation to the young people by shortlisted artists
Monday 11 December 2023	Appointment of creative(s)
Monday 11 December - Friday 22 March 2024	Development of ideas, sign-off of final design, co-creation / fabrication /making phase: detailed deadlines to be agreed

All work must be completed by 30 March 2024 – Artswork will arrange a launch event.

The applicant artist may suggest amendments to the timeline in their proposal, but the endpoint for the installation and completion of the commission is fixed. The proposal should

allow for approximately 40 hours working with young people - it should be assumed that most of this work will take place during evenings and weekends.

Intellectual Property

The commission is a co-creation between the creative(s) and the young cultural changemakers. Legal title and ownership of the work is retained by the creative(s) until payment of the final instalment of the fee is made. Once payment has been made, ownership of the work will transfer to St Mary's Hospital.

The creative(s) retains the right to be credited in any communications, photographs, film, promotional materials or reproduction in any media. Any reproduction or media is guaranteed for non-commercial purposes.

Contracting

The successful artist will be issued a Contract for the work. Payment will be made in two instalments, one on commencement and one on completion.

Requirements

- The artist will be responsible for their own insurance and must have Public Liability Insurance cover of at least £5million whilst working on the project and for six years after its completion. It is the responsibility of the Artist to ensure that any individual or organisation they work with or who is involved with the installation has Public Liability Insurance cover of at least £5million on the same terms.
- The commissioned artist(s) must hold an up-to-date DBS check. Applicants are advised to obtain basic checks (completed within the last 6 months) and to confirm this is in place as part of their proposal submission. Basic checks can be obtained here: <https://www.gov.uk/request-copy-criminal-record>. A further Enhanced DBS check will be required as part of any Contract for this work.
- Approval of the final designs will be dependent on the artist's ability to demonstrate that the works meets all health and safety, maintenance, technical and durability considerations
- The garden must be low maintenance and have a minimum lifespan of 12 years
- Where relevant, materials should be vandal-resistant and cleanable as required by the setting in which the artwork is installed



Supported using public funding by
**ARTS COUNCIL
 ENGLAND**

Artswork Limited
 Registered Charity No. 800143
 Company Limited by guarantee
 Registered in England No. 2150619

Artist Specification

We are seeking a creative or creatives who can fulfil the following criteria to demonstrate their ability to engage meaningfully with the process as well as to create an outstanding final piece of art (garden). These criteria will be scored as the basis of awarding the commission:

- A proven track record working with children and young people and in sharing skills with them
- Experience working collaboratively with a broad range of community partners
- A proven track record in substantive community consultation processes resulting in clear community ownership of the finished piece
- Demonstrable experience creating excellent, diverse art works that stimulate engagement with public and community groups especially children and young people
- Experience working in diverse materials and media to respond to the needs of specific places, communities and briefs
- A defined relationship to Isle of Wight. The successful artist will be based in or near the place-making area and be able to complete the work without long distance travel
- Significant track record of delivering commissioned art successfully to time and to budget
- Artist(s) must be available to work with the young people for approximately 40 hours between December 2023 and March 2024
- Delivery of Bronze level Arts Award will be part of this programme and experience of delivering Arts Award would be an advantage, although training can be given

To submit a proposal



Supported using public funding by
**ARTS COUNCIL
 ENGLAND**

Artswork Limited
 Registered Charity No. 800143
 Company Limited by guarantee
 Registered in England No. 2150619

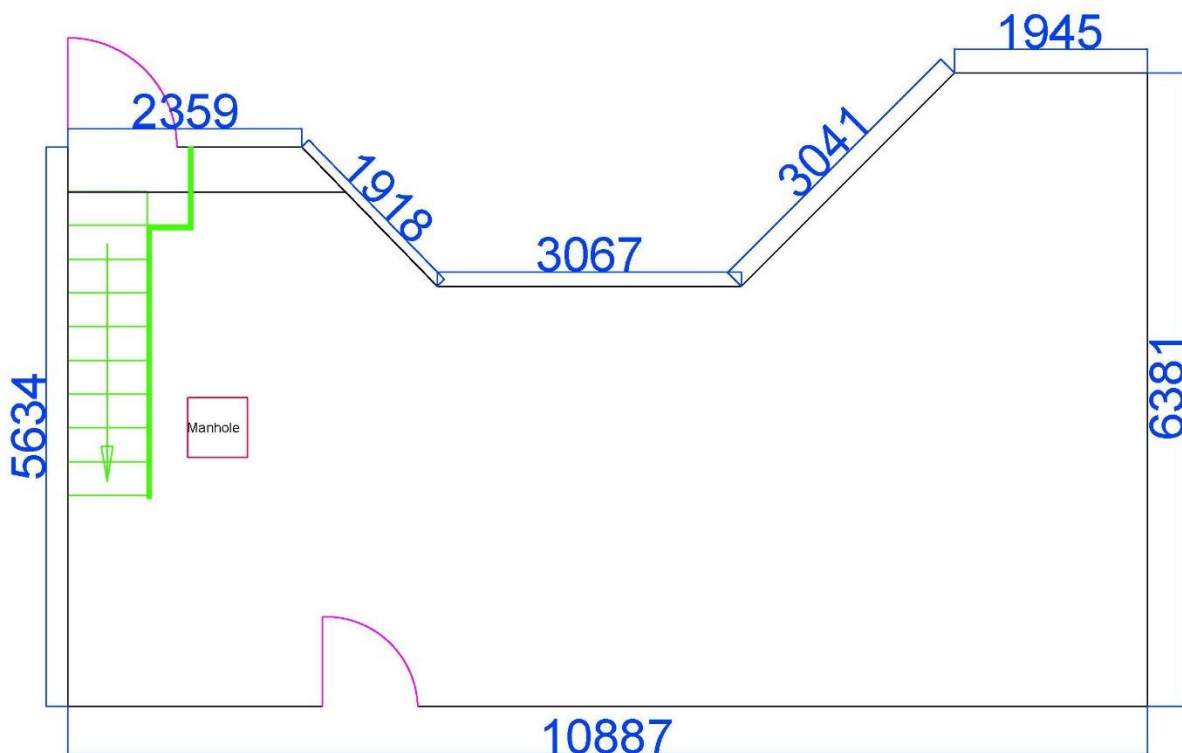
To apply please send a short (2p A4 maximum) expression of interest responding to the Artist Specification above and a CV which can include up to 5 images or a link to a website.

Applications must be received by email to petarainford@artswork.org.uk by **10:00 on Monday 27 November 2023**

Applicants will be scored against the criteria above by the selection panel which includes young people involved in the project.

Shortlisted candidates will be invited to pitch at a Dragon's Den event at The Children's Ward, St Mary's Hospital, Newport PO30 5TG on **Thursday 7th December 2023, between 6pm and 8pm**. Please let us know if we can offer any access support to facilitate your attendance.

Garden dimensions





Here is a photo of the current garden

Enquiries

Any questions about the commission should be directed to Peta Rainford, Placemaking Creative Producer, petarainford@artswork.org.uk

PLEASE DO NOT VISIT THE CHILDREN'S WARD WITHOUT AN APPOINTMENT

Please note my working days are Tuesday-Thursday.

Artswork

Artswork works to empower young people through creativity, giving them the opportunity to explore and fulfil their potential in a future that we are all making together. As an Arts Council National Portfolio Organisation, we work across three strands:

- Activate Young Cultural Changemakers - Putting creative place-making power in the hands of young people



Supported using public funding by
**ARTS COUNCIL
 ENGLAND**

Artswork Limited
 Registered Charity No. 800143
 Company Limited by guarantee
 Registered in England No. 2150619

- Activate Creative Careers - Building an equitable and sustainable pathway to creative careers for young people
- Activate Creative Learning - Growing creative approaches to learning in classrooms, workplaces and communities

Artwork aims to engage artists and facilitators that are representative of the communities and children and young people we support. We expect our team and those working on our behalf to commit to our Anti-Discrimination Charter which can be accessed via our website. <https://artwork.org.uk/wp-content/uploads/2022/10/Anti-discrimination-charter.pdf>

Thank you very much for your interest.

www.artwork.org.uk



Supported using public funding by
**ARTS COUNCIL
ENGLAND**

Artwork Limited
Registered Charity No. 800143
Company Limited by guarantee
Registered in England No. 2150619